

OnlineMusic Theory Entrance Exams



Floyd Richmond
Tarleton State University

CRichmond@Tarleton.edu

floydrichmond.com/atmi2019



Some Theory Entrance Exams

Tarleton State University

- ❖ Theory Placement Examination: All new and transferring students must take a Music Theory Placement Examination. It consists of a written section in the areas of theory and musicianship, as well as testing in the areas of sight singing, ear training, and keyboard skills. This exam is taken during the first semester at Tarleton.



Some Theory Entrance Exams

- ❖ Baylor University
- ❖ University of Valley Forge
- ❖ Appalachian State University
- ❖ University of Southern California

Some Theory Entrance Exams

❖ Baylor University

Undergraduate

I. Regular Placement

All students entering the School of Music as a music major or minor are required to take a Theory/Musicianship Placement Exam. The exam is designed to determine readiness for Mus 1301 (Theory I) and Mus 1101 (Musicianship I).

Part I of the exam covers written theory fundamentals- treble and bass clefs, note names (identification on staff and on keyboard), accidentals, enharmonic pitches, major key signatures, rhythmic values and meter signatures. Based on this part of the exam students are advised to take either Mus 1200 (Introductory Theory) or Mus 1301 (Theory I).

Part II of the exam tests basic aural skills-intervals, triad quality, meter identification, rhythmic dictation, melodic dictation, and melodic error detection. Based on this part of the exam, students are advised to take either Mus 1100 (Introductory Musicianship) or Mus 1101 (Musicianship I).

Some Theory Entrance Exams

❖ Appalachian State University

The Music Theory Placement Exam:

The exam consists of 9 required sections of questions regarding written elements of music theory, followed by 3 optional sections of questions regarding music theory aptitude, student confidence, and standardized test scores. The optional sections are for research purposes, while the required sections are used for music theory course placement. The required sections assess knowledge in the following areas:

- Rhythm Notation
- Scales
- Intervals
- Triads
- Key Signatures
- Musical Pattern Completion

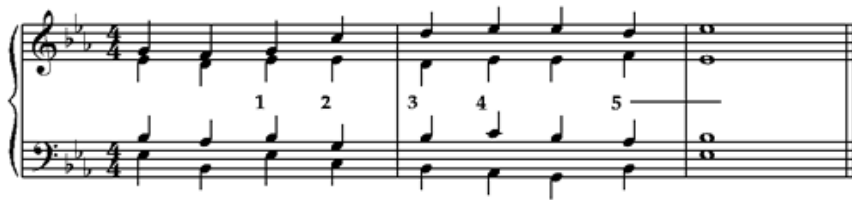
The online exam can be accessed here:

https://appstate.az1.qualtrics.com/jfe/form/SV_3rwLAnT3EJe99Rz

Some Theory Entrance Exams

❖ University of Southern California

Error Detection: Questions 1-5 refer to the example below. Indicate the problem(s) for each of the numbered places in the example. Problems may encompass the chord **immediately preceding** the numbered chord. Note that question 5 refers to both of the final two chords.




1.	a. incorrect spelling	c. parallel 5ths
	b. improperly resolved 7th	d. chord spacing
2.	a. parallel 5ths	c. chord spacing
	b. wrong inversion	d. parallel octaves
3.	a. missing 3rd	c. bad doubling
	b. incorrect spelling	d. chord spacing
4.	a. incorrect spelling	c. unresolved 7th
	b. parallel octaves	d. wrong inversion
5.	a. improperly resolved 7th	c. parallel 5ths
	b. chord spacing	d. missing 3rd

Reveal Answer

Some Aurals Entrance Exams

❖ University of Southern California


	Play Example	Reveal Answer
-----------------------------------------------------------------------------------	------------------------------	-------------------------------

Melodic Dictation Answer



Some Aurals Entrance Exams

❖ University of Southern California

 <p>B flat:</p>	<p>Play Example</p>	<p>Reveal Answer</p>
--------------------------------------------------------------------------------------------------	-------------------------------------	--------------------------------------



B flat: I V $\frac{7-6}{4\ 3}$ I⁶ vi V $\frac{6}{5\ 2-3}$ IV⁶ ii⁷ |

G min: iv⁷ Fr⁺⁶ i $\frac{6}{4-5}$ vii $\frac{o7}{V}$ i $\frac{6}{4}$ V $\frac{7}{5\ 4-3}$ i

Some Aurals Entrance Exams

❖ University of Southern California

Contemporary Compositional Techniques

Choosing from the lettered options below, identify which contemporary compositional technique best describes the listening excerpt. (In the actual exam, each excerpt will be played once.)

Example #1	Play Example	Reveal Answer
Example #2	Play Example	Reveal Answer
Example #3	Play Example	Reveal Answer
Example #4	Play Example	Reveal Answer

Contemporary Compositional Techniques Answer 1

1. *f* – Pandiatonicism (Copland *Appalachian Spring*)

For further study identifying contemporary compositional techniques, see:

Horvit/Koozin/Nelson *Music for Ear Training*, 4th Edition (Includes online resources for self-study).

Specifically Units 18 through 26.

Options for Online Testing

- ❖ floydreichmond.com
- ❖ teoria.com
- ❖ musictheory.net
- ❖ [Appalachian State University - Qualtrics](#)
- ❖ harmonium.com
- ❖ Coming soon:
 - ❖ floydreichmond.com/notation/fundamentals.html

1 of 13 Right = 0 Wrong = 0 Score = 0 Sound Effects ☐

Name this note.



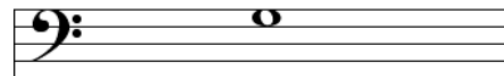
ABCDEFGFG

Previous Next About

This template was developed by Dr. C. Floyd Richmond,
Music Education Department, School of Music, West Chester University, West Chester, PA 19383
Copyright 1999, 2000 All Rights Reserved

1 of 13 Right = 0 Wrong = 0 Score = 0 Sound Effects ☐

Name this note.



ABCDEFGFG

Previous Next About

This template was developed by Dr. C. Floyd Richmond,
Music Education Department, School of Music, West Chester University, West Chester, PA 19383
Copyright 1999, 2000 All Rights Reserved

1 of 15 Right = 0 Wrong = 0 Score = 0 Sound Effects ☐

Name this major key signature



ABCDEFGFG

♯ ♭

Check
Previous Next About

This template was developed by Dr. C. Floyd Richmond,
Music Education Department, School of Music, West Chester University, West Chester, PA 19383
Copyright 1999, 2000 All Rights Reserved

1 of 15 Right = 0 Wrong = 0 Score = 0 Sound Effects ☐

Name this minor key signature



ABCDEFGFG

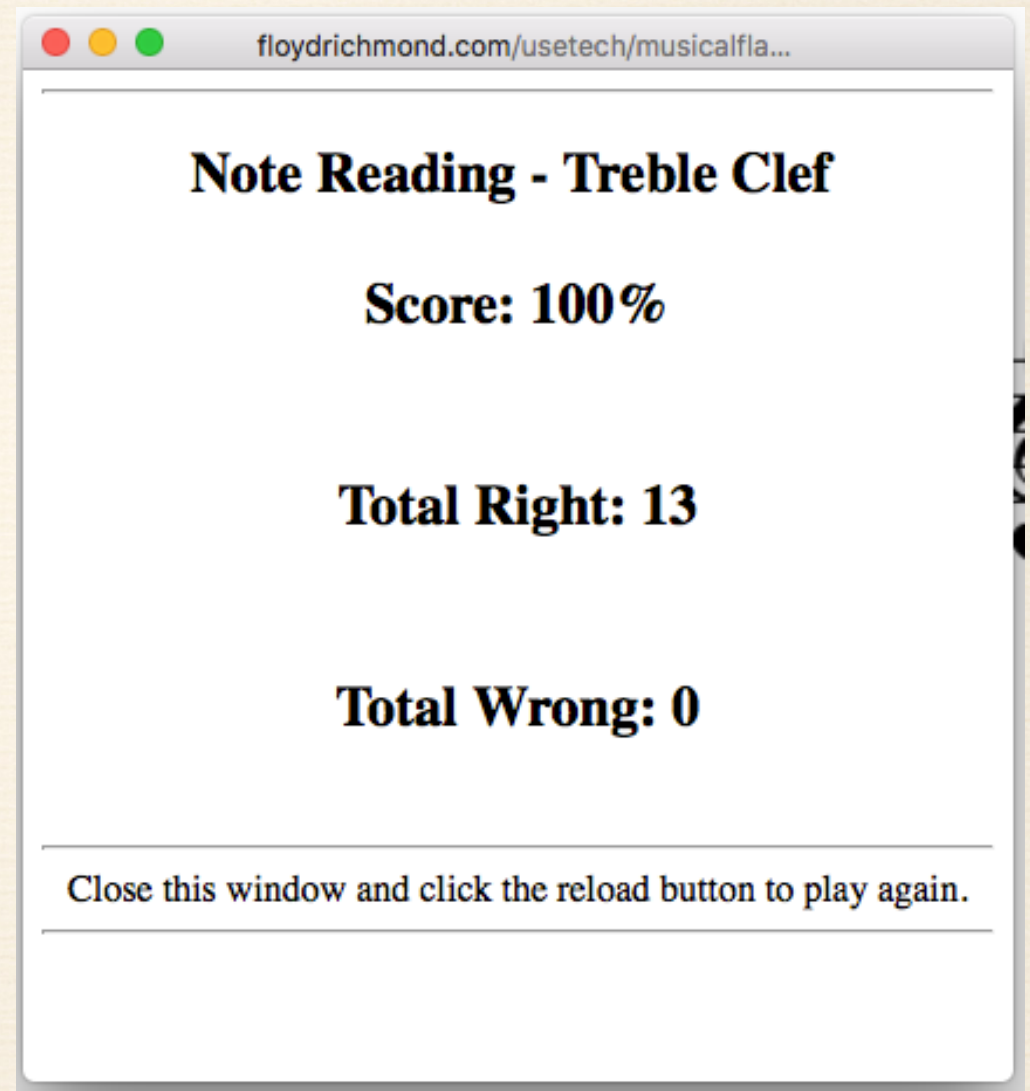
♯ ♭

Check
Previous Next About

This template was developed by Dr. C. Floyd Richmond,
Music Education Department, School of Music, West Chester University, West Chester, PA 19383
Copyright 1999, 2000 All Rights Reserved

❖ floydrichmond.com

These programs are not comprehensive and do not interact with common LMS systems such as Blackboard or Canvas. Students may complete the activity and then submit proof of their accomplishment which must be recorded by the teacher.



teoria.com

Ear Training

► Intervals

► Notes

► Chords

► Scales, Melodies

Rhythmic Dictation

► Jazz

Key Ear Training



Music Theory

► Intervals

► Reading

► Key Signatures

► Scales

► Chords

► Harmonic Functions

► Transposing Instruments

► Jazz

teoria.com

Why should I become a member of *teoria.com*?

- 1** You can enhance your online experience by becoming a member. You will be able to run the exercises and **save your scores to a database**. This can be useful to keep record of the time you spend and see your progress. You will be able to create detailed reports of your activity at any moment. [More information](#).
- 2** If you are a **teacher** you can create groups for your students. This option will allow you **supervise their work in the exercise area** and know exactly what exercises they are doing and their score. You will receive detailed weekly reports and you can generate reports at any moment. This feature **requires that your students become members** of *teoria.com*. See the [Teacher's Manual](#).
- 3** As a member, you will not see any ads and will help keep these pages alive.

Appalachian

- ❖ Demo
- ❖ Purpose
- ❖ Content
- ❖ Pros
- ❖ Cons

Appalachian

❖ Demo - Play Video or Take Test

Appalachian

- ❖ Purpose
- ❖ Addresses specifically placement in fundamentals or theory.

Appalachian

❖Content

- ❖ Standard and non-standard notation (C/I)
- ❖ Rhythmic notation in simple and compound meters (C/I)
- ❖ Are these triads? (Y/N)
- ❖ Name the major and minor key signatures.
- ❖ Name the scales. (M m d A)
- ❖ Quality of intervals (P M m d A)
- ❖ Quality of triads (M m d A)
- ❖ Can you see and continue the patterns? (intervalic, arpeggios)

Appalachian

❖ Pros

- ❖ Well-designed, thoughtful questions, generally thorough.
- ❖ Looks at things differently than many entrance exams.
- ❖ Record keeping
- ❖ Immediate notification of results
- ❖ Timed (prevents lengthy exams, and makes it difficult for students to cheat)
- ❖ Random order of similar problems?
- ❖ Bulletproof- always works (with internet connection)

Appalachian

❖ Cons:

- ❖ Mostly recognition rather than construction
- ❖ Content - No figured bass symbols, Rhythm limited to standard, non standard meter
- ❖ Content - not customizable - though you could contact the school and possibly collaborate.
- ❖ Some exceedingly difficult content (D# harmonic minor scale)
- ❖ Timed (sometimes, barely enough for a very fast student)

musictheory.net



Note Identification

Identify the displayed note.



Key Signature Identification

Identify the displayed key signature.



Interval Identification

Identify the displayed interval.



Scale Identification

Identify the displayed scale.



Chord Identification

Identify the displayed chord.

STAFF CONSTRUCTION



Note Construction

Construct the requested note.



Key Signature Construction

Construct the requested key signature.



Interval Construction

Construct the requested interval.



Scale Construction

Construct the requested scale.

KEYBOARD IDENTIFICATION



Keyboard Note Identification

Identify the highlighted piano key.



Keyboard Reverse Identification

Identify the note by pressing a piano key.



Keyboard Interval Identification

Identify the interval of the highlighted piano key.



Keyboard Scale Identification

Identify the scale of the highlighted piano key.



Keyboard Chord Identification

Identify the chord of the highlighted piano key.

FRETBOARD IDENTIFICATION



Fretboard Note Identification

Identify the note of the marked fretboard position.



Fretboard Interval Identification

Identify the interval of the marked fretboard position.



Fretboard Scale Identification

Identify the scale of the marked fretboard position.



Fretboard Chord Identification

Identify the chord of the marked fretboard positions.

EAR TRAINING



Keyboard Ear Training

Listen and press the piano key of the played note.



Note Ear Training

Listen and identify the played note.



Interval Ear Training

Listen and identify the played interval.



Scale Ear Training

Listen and identify the played scale.



Chord Ear Training

Listen and identify the played chord.

FOR TEACHERS



Exercise Customizer

Create a permanent link to a customized exercise.



Code Checker

Validate an exercise verification code.

musictheory.net

Experience musictheory.net potential placement test at:

- ❖ <http://floydreichmond.com/atmi2019>
- ❖ See video demo (Warning, large file, right click to download before playing)

harmonia.com

(content)

Sample Content Galleries

Below is just a sample of our library, used for a 1st semester college level music theory course.

But we also have more. Advanced harmony. Basics, like intervals and scales. Sign up for a teacher's account now to view our library. Add our content and start building your course. It is completely free for teachers.

And remember, you can create your own content as well - completely interactive worksheets, intelligently analyzed, and automatically graded.

- 📄 **Cadences and V7**
- 📄 **First-Species Counterpoint**
- 📄 **Intervals**
- 📄 **Inversions of Dominant & Leading-Tone Sevenths**
- 📄 **Predominant Function**
- 📄 **Roman Numerals and Inversions**
- 📄 **Second-Species Counterpoint**
- 📄 **Tonic & Dominant**
- 📄 **Tonic & Dominant Expansions; Six-Three Chords**
- 📄 **Tonic & Dominant, Cadences, Intro to Part Writing**
- 📄 **Triads & Seventh Chords - Basic**

❖ floydreichmond.com/notation/fundamentals.html

❖ In development!

❖ Coming soon!

❖ Preview:

floydreichmond.com/usetech/musicalflashcards/aaaindex.html

OnlineMusic Theory Entrance Exams



Floyd Richmond
Tarleton State University

CRichmond@Tarleton.edu

floydrichmond.com/atmi2019

